



# Component Placing, Electrical

Applicable for J110 and J120

## Contents

<b>1</b>	<b>Mounting drawing table .....</b>	<b>2</b>
<b>2</b>	<b>Mounting drawings.....</b>	<b>3</b>
2.1	F-Version Primary Side.....	4
2.2	F-Version Secondary Side.....	5
2.3	I-Version Primary Side.....	6
2.4	I-Version Secondary Side .....	7
<b>3</b>	<b>Revision history.....</b>	<b>8</b>

# 1 Mounting drawing table

Board Number	SB0KIM1T20F	SB0KIM1T20I
Version	"F-Version"	"I-Version"
Distinguish		
Comments	See page 4 and 5	See page 6 and 7

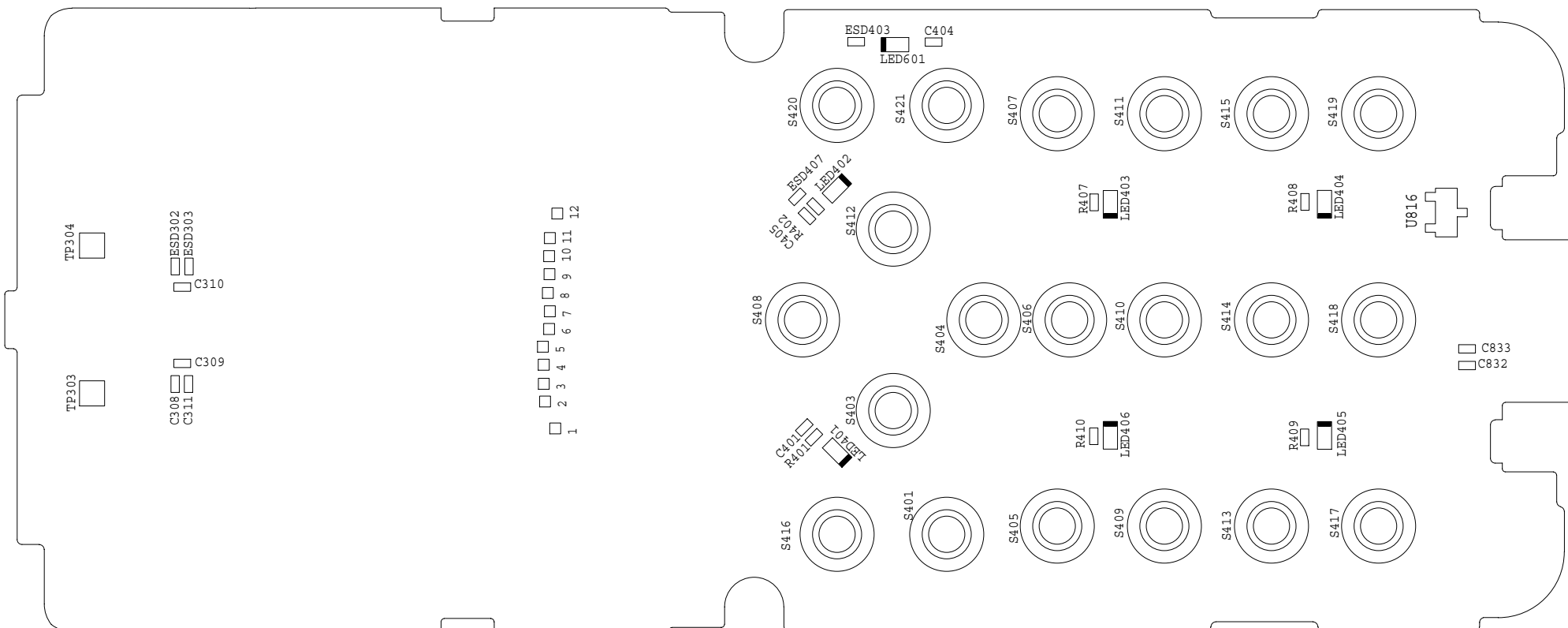
By using the "Search" function and enter the component name you can find the position of the component. (Use Adobe Reader 7.0 or a later version). Example: You can see the component name highlighted on the circuit board (use zoom to enlarge).

## **2 Mounting drawings**









### 3 Revision history

Rev.	Date	Changes / Comments
1	2007-06-12	1 <sup>st</sup> release
2	2008-04-01	Added I-version